



GAT MONTHLY MEMBERSHIP PROGRESS REPORT

Results as of: 6/30/2023

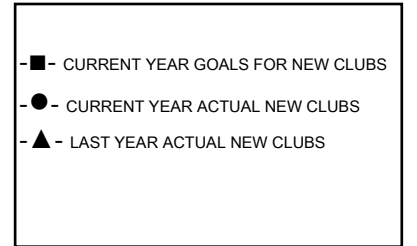
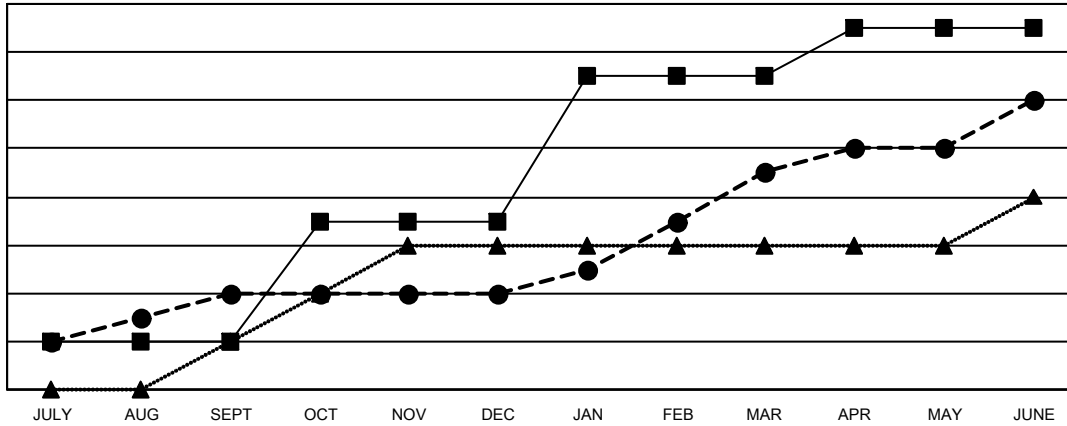
Multiple District A

LOCATION: ONTARIO

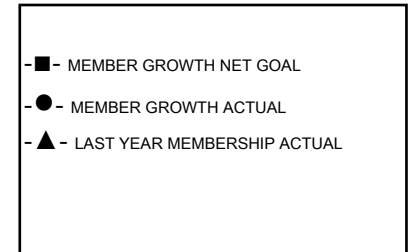
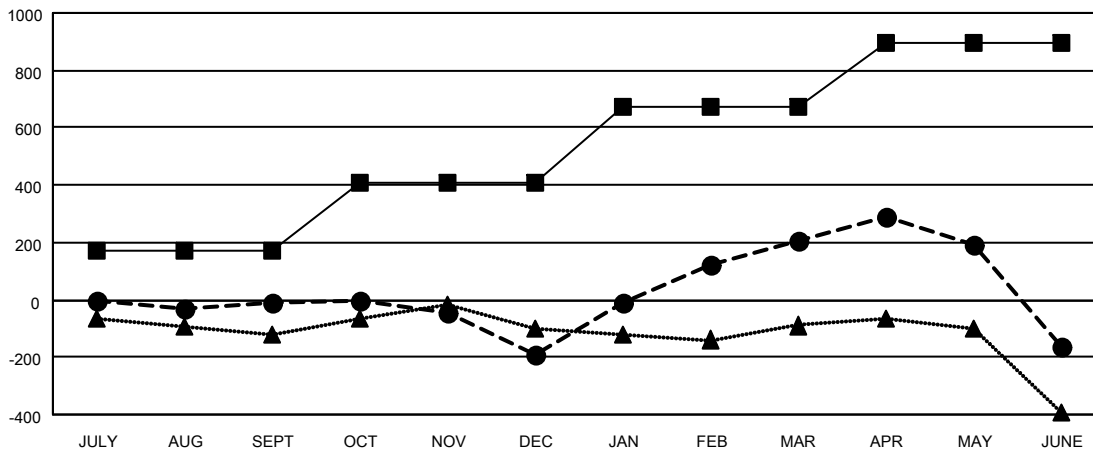
Clubs			
RESULTS FOR 2022-2023			
QUARTER	NEW CLUB GOAL	NEW CLUBS	DROPPED CLUBS
JULY/AUG/SEPT	2	4	3
OCT/NOV/DEC	5	0	6
JAN/FEB/MAR	6	5	2
APR/MAY/JUNE	2	3	11

Members			
RESULTS FOR 2022-2023			
QUARTER	MEMBER GROWTH NET GOAL	MEMBER GROWTH ACTUAL	DROPPED MEMBERS ACTUAL (including transfers)
JULY/AUG/SEPT	170	372	331
OCT/NOV/DEC	240	479	605
JAN/FEB/MAR	260	732	282
APR/MAY/JUNE	225	650	946

GOALS AND ACTUAL NEW CLUBS CUMULATIVE



GOALS AND ACTUAL MEMBERS CUMULATIVE



DROPPED CLUBS: 22	377 CLUBS OF 540 ADDED 1 OR MORE NEW MEMBERS	GENDER DISTRIBUTION
DROPPED MEMBERS	CLICK HERE FOR CUMULATIVE MEMBERSHIP DATA	MALE 7,777 (64.44%)
DECEASED 232		FEMALE 4,291 (35.55%)
CLUB CANCELLED 64		NON BINARY 0 (0.00%)
OTHER 1,868		PREFER NOT TO ANSWER 1 (0.01%)
TOTAL 2,164		TOTAL FAMILY UNIT MEMBERS 2,130
		FAMILY MEMBERS PAYING HALF DUES 1,102